

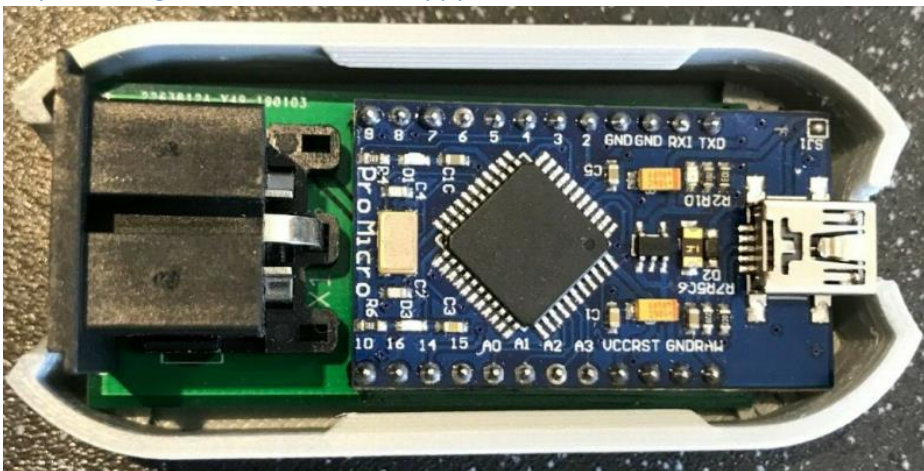
Running CP/M on C64/SX-64

- 1) Commodore CP/M Cartridge



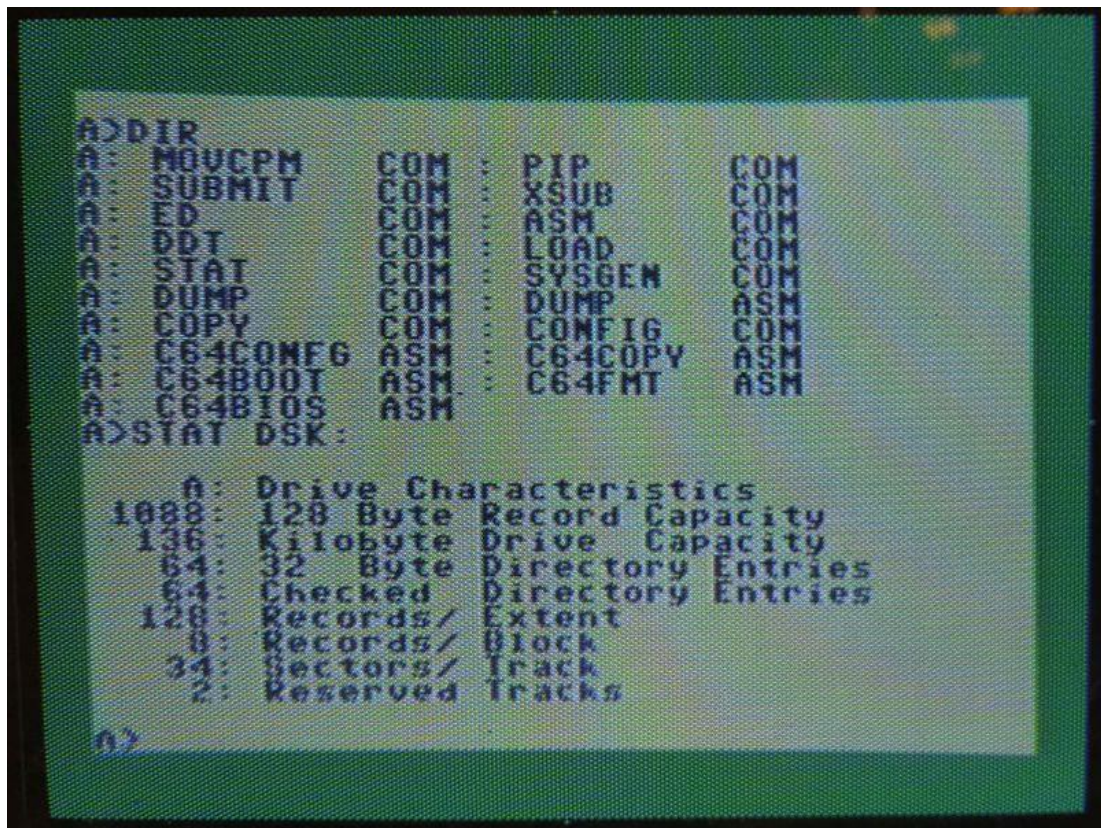
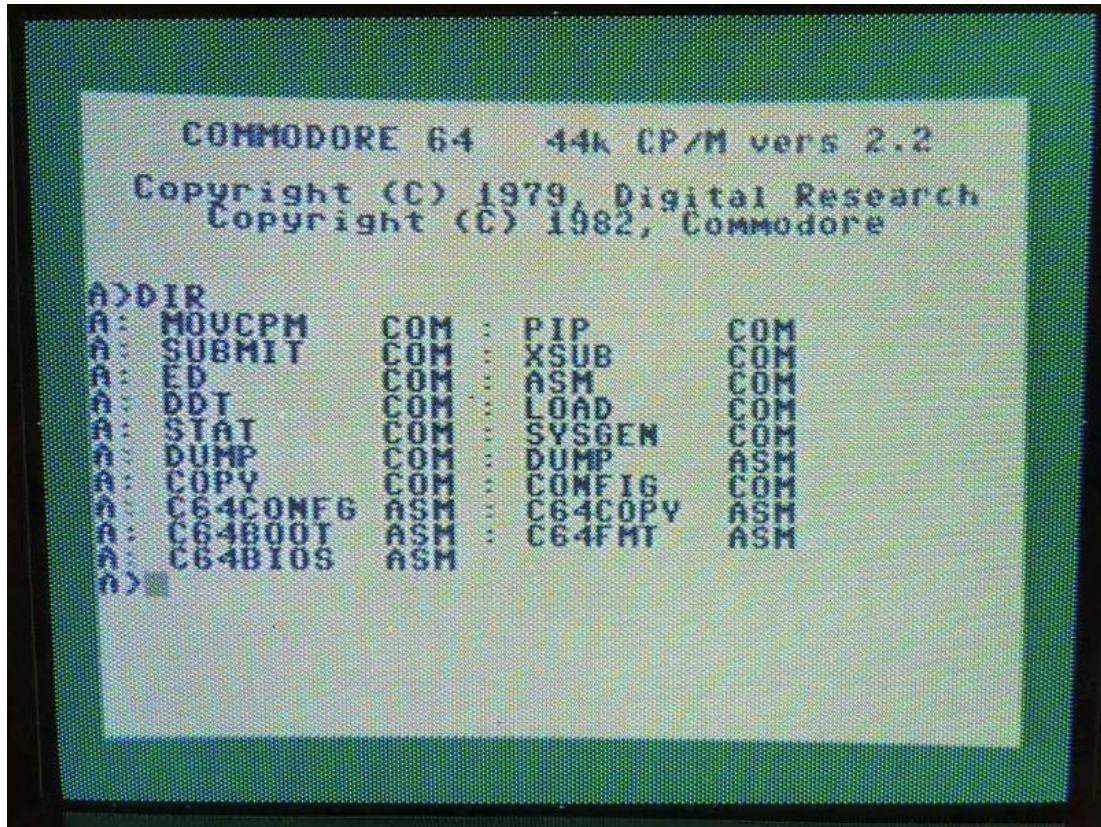
- 2) Zoomfloppy to connect Commodore disk drives to PC

<http://store.go4retro.com/zoomfloppy/>



- 3) Download CP/M disk image
<http://www.zimmers.net/anonftp/pub/cbm/demodisks/c64/cpm/index.html>
<http://www.z80.eu/c64/c64-cpmdisk.zip>
- 4) OpenCBM, Zoomfloppy-Driver, CBM-Transfer plus CTOOLS to transfer disk images & files to Commodore disks
<https://opencbm.trikaliotis.net/>
<https://zadig.akeo.ie/>
<http://www.6502.org/users/sjgray/software/cbmxfer/cbmxfer.html>
<http://www.zimmers.net/anonftp/pub/cbm/crossplatform/converters/unix/ctools04.zip>
- 5) 80 character emulation (optional)
<http://www.z80.eu/downloads/SOFT80.COM>
Add the SOFT80.COM file to the CP/M disk image via CTOOLS.

6) Boot CP/M




```

B: ED      CMB : BSB      CMB
B: BOOT    CMB : LMB      CMB
B: START   CMB : SYSGEN   CMB
B: BUBP    CMB : BUBP     BSB
B: COPY    CMB : CMBTG    CMB
B: CMBWBC  BSB : CMBWBC   BSB
B: CMBWBT  BSB : CMBWBT   BSB
B: CMBWPS  BSB : SWFTDR   CMB
B> S T R I
B> S T R I T
START)

```

B> S T R I B S B :

- B: Drive Characteristics
- 1000: 128 byte Record Capacity
- 156: 8192 byte Drive Capacity
- 64: 32 byte Directory Entries
- 64: Checked Directory Entries
- 128: Records/Extent
- 2: Records/Block
- 79: Sectors/Track
- 7: Reserved Tracks

B>